

# LIGHT & SPACE

Architects and  
planning offices  
in focus

AT

[WWW.ISOLED.AT](http://WWW.ISOLED.AT)

DE

[WWW.ISOLED.DE](http://WWW.ISOLED.DE)

CH

[WWW.ISOLED.CH](http://WWW.ISOLED.CH)

4/6

**2025**





"Architecture is the artful,  
correct and magnificent  
interplay of structures gathered  
under the light."

~ Le Corbusier

# CONTENTS

<b>3</b>	Table of Contents
<b>4</b>	Light in architecture
<b>6</b>	Lighting concepts
<b>7</b>	Lighting design with expertise
<b>8</b>	People take centre stage
<b>9</b>	Sustainable lighting solutions
<b>10</b>	Working together to find an individual solution
<b>11</b>	A lighting solution can be this smart
<b>12</b>	From the idea to the end product
<b>14</b>	Norms, standards & safety
<b>16</b>	Industries
<b>28</b>	Product range

# Light in architecture

## LIGHT IN TRANSITION: From fire to modern electricity

For a long time, the sun was the only source of light for mankind. The discovery of fire, followed by oil and tallow lamps, laid the foundations for today's lighting. Even though architecture has changed a great deal over the last few centuries, the relationship to lighting remains the same and is growing with the increasing technical possibilities

In modern architecture, light has long since transcended its purely practical use and established itself as a central design element. The lighting in a room has a significant influence on its atmosphere. Warm white LEDs, for example, create a cozy and inviting environment, while cool white LEDs lend the room a sense of spaciousness and brightness. Artificial lighting is also used to emphasize architectural elements and to make buildings appear in a new light through the interplay of light and shadow.

Today, lighting design is an integral part of architecture, on a par with interior design and structural calculations. To fully perceive a room, the body activates all the senses, with vision being the most important. It is only through the targeted positioning of the light source that the room unfolds its final effect.

For architects and lighting designers, this means that lighting must be designed not only functionally, but also aesthetically and emotionally. Well thought-out lighting design can transform spaces, arouse emotions and significantly influence the perception of architecture. The challenge, and at the same time the opportunity, lies in using light to stage the interplay of form, material and space and thus create unique architectural experiences.







# Lighting concepts

## COMBINING FUNCTION AND AESTHETICS

### General lighting

General lighting provides uniform and general illumination of a room and ensures that the entire room is sufficiently bright. Common solutions are ceiling luminaires, recessed luminaires or pendant luminaires that emit soft, diffused light and minimize shadows.

### Accent lighting

This creates atmospheric accents or highlights certain sectors. It draws attention to architectural details, works of art or particularly special pieces of furniture. Spotlights, wall lights or directional spotlights are frequently used accent lighting fixtures that focus the light on a single point.

### Functional lighting

Also known as task lighting, this is tailored to specific tasks and activities. It provides concentrated and intense light to facilitate detailed work. Lighting is used that directs the light specifically onto work surfaces or sectors.

### Orientation light

It is used for safe and easy navigation through buildings and outdoor areas, especially in low ambient light or darkness. It provides adequate lighting for paths, stairs and entrances, even in an emergency.

# Lighting design with expertise

Professional lighting design is recommended for every project. In trade and industry in particular, there are not only practical factors but also legal requirements that must be taken into account when planning lighting. These serve to ensure safety in the workplace and prevent accidents. These standards include specifications for lighting intensity and glare. The issues of bans on illuminants and conversions are also unavoidable for many companies and require professional planning.

Lighting design is geared towards the specific requirements and wishes of the client, based on the initial situation of the project. After a thorough consultation, suitable luminaires are selected and the lighting design is carried out according to these products. Once the client is satisfied and the lighting meets all legal requirements, the project can be implemented.



# People take centre stage

In recent years, the focus of lighting has increasingly turned to people. Numerous studies show that light not only influences vision, but also people's internal clocks. Depending on light color and brightness, the brain reacts and regulates the release of hormones and messenger substances that control the natural daily routine. Warm light, for example, promotes melatonin production and helps you fall asleep, while cold light elevates cortisol levels and has an uplifting effect. This rhythm is based on the natural day-night cycle.

## Human Centric Lighting

As people spend a lot of time indoors, the effect of natural light is now also being technically imitated. The light color and lighting intensity adapt to the biological rhythm. In the morning, the light is dimmed and warmer, during the course of the day it becomes colder and brighter, and in the evening it becomes darker and warmer. This biologically effective lighting is tailored to the needs of the human body and offers numerous health benefits.

Human Centric Lighting (HCL) improves well-being, supports the sleep-wake rhythm and increases vitality. Biodynamic lighting makes it easier to concentrate and increases productivity.



2.700 K  
6:00 O'CLOCK

4.000 K  
9:00 AM

6.500 K  
12:00 PM

4.000 K  
3:00 PM

2.700 K  
6:00 PM

## Energy-efficient lighting

Daylight-dependent control in connection with time and presence sensors can save up to 55 % energy. At the same time, lighting has a positive effect on physical and mental health.

# Sustainable lighting solutions

Energy efficiency alone does not make a lighting solution sustainable. Lighting is considered sustainable if it takes environmental protection, economic efficiency and social aspects into account. By using reusable materials and recyclable, low-pollutant components, the end product can be a resource-saving luminaire that supports the material cycle. Replaceable luminaire parts allow for easy repairs, while high efficiency and a long service life reduce the carbon footprint and operating costs. Good lighting quality improves both visual conditions and the atmosphere and promotes well-being. A sustainably planned lighting solution increases safety in public spaces and elevates the quality of life.

There is a strong trend towards combining lighting technology and acoustic solutions. At ISOLED® we not only value aesthetics, but also functionality. The use of natural materials is becoming increasingly important. With our latest collection of reclaimed wood luminaires, we are focusing on environmentally friendly design.

Our individual lighting solutions promote the well-being of people and animals alike by creating a harmonious environment that integrates natural light sources and materials.



## A sustainable lighting concept - this must be taken into account

- » LEDs in outdoor areas have efficient energy consumption, reduced light pollution and protect nocturnal insects with suitable light color.
- » Thanks to improved reflector and lens technology, the light is directed precisely and with low losses onto the area to be illuminated.
- » Lighting design by experts and implemented with suitable planning software enables a lighting solution to be chosen that meets all the user's technical requirements and wishes. Particularly in the workplace, lighting conforming to standards plays a major role in ensuring optimal working conditions.
- » LED technology also scores points with its impressive environmental footprint. LED lights cause 90% of the CO<sub>2</sub> emissions generated during operation and only 2% during production.
- » Light management makes it possible to ideally match the light scenes to the daylight. Control by means of sensors enables great savings potential and, in connection with modern LED systems, energy consumption can be reduced by around 80 %. Due to these savings, the use of lighting management systems is considered the minimum standard in most sectors. If a human-centric lighting concept is planned for the lighting systems, the issue of light management is unavoidable.

# Working together to find an individual solution

We support you with tailor-made concepts and comprehensive advice to implement your visions perfectly. Trust in our expertise and let us realize your projects together.

Our lighting experts combine creative innovations with technical know-how to find lighting solutions that improve the atmosphere of the room and user comfort. We are at your side with our expertise and commitment from the initial idea all the way to implementation. With us, your project will be a complete success.

In order to realize all your visions, we also offer ready-made and custom-made products. As every project has different requirements, our aim is to work with you to find a lighting solution that meets the aesthetic and functional requirements and does not exceed the project's budget.



ISOLED® is continually committed to finding innovative ways to increase the efficiency and effectiveness of lighting systems. This enables us to offer customized lighting solutions that are specifically tailored to the needs of our customers and at the same time help to reduce the ecological footprint.

To ensure efficient collaboration with BIM-capable companies, ISOLED® provides extensive data material and enables the exchange of 3D files, tender texts, object files and luminaire data. This helps companies to optimize the planning and construction process. Our initiative aims to enable BIM-capable companies to make optimum use of their resources and successfully implement the digital planning process.



## **ISOLED® Production**

[Click here to watch the video](#)



# A lighting solution can be this smart

Lighting management systems have become indispensable today. Simply switching on and off is a thing of the past. The ability to dim, change the light color, motion sensors and much more have revolutionized the lighting market and contribute significantly to sustainability. Electronic control is the only way to fully exploit all the benefits of modern light sources.

## ADVANTAGES OF LIGHT MANAGEMENT SYSTEMS



### Ergonomic reasons

Efficient lighting systems make a significant contribution to increasing safety. They provide clear orientation in buildings and outdoor areas, making them easier to use and optimizing route guidance.



### Psychological effects

Strengthens motivation and productivity while creating different moods that promote well-being. In addition, a well thought-out lighting design supports the brand identity by visually underlining the brand values and creating a uniform appearance.



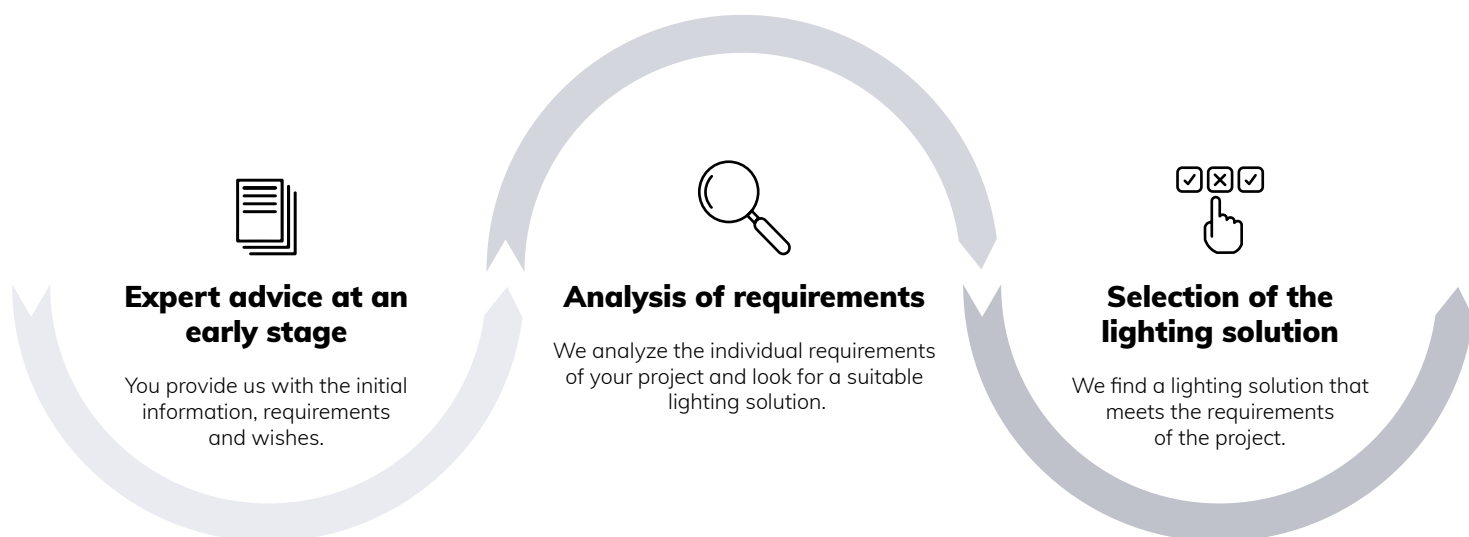
### Economic aspects

The high efficiency and durability of the components also reduce operating and maintenance costs. At the same time, they increase the value of the building by integrating modern, environmentally friendly and future-proof solutions.

### Additional advantages at a glance

- » The lighting can be adapted to the brightness of the surroundings using daylight sensors. This results in energy savings of up to 80 percent.
- » With motion detectors, the lighting is always activated when the room is entered. The light switches off automatically by timer when no one is in the room, thereby reducing unnecessary power consumption.
- » Various stored light scenes enable lighting to be adjusted quickly. Smart home-compatible lighting
- » In addition to exciting effects, HCL concepts can also be implemented by adjusting light color and brightness.

# From the idea to the end product



Even in the early project phase, professional advice is of the utmost importance. We analyze the specific requirements of your project and develop tailor-made lighting solutions that meet both aesthetic and functional demands. In doing so, we take into account factors such as energy efficiency, durability and flexibility.

Our lighting experts will help you exploit the full potential of innovative lighting systems, giving you a competitive advantage.

A lighting solution that is individually tailored to the project makes it possible to turn planning visions into reality and achieve a unique end result.

By working closely with our customers, we understand their specific requirements and can plan a lighting concept that meets their aesthetic, functional and financial expectations. In doing so, we emphasize the highest standards in the sectors of efficiency, sustainability and user comfort.

Optimal product advice, comprehensive project support and innovative lighting design are the three central pillars on which the realization of your project rests. With our full project service, we offer you expert advice that develops a sustainable and aesthetically pleasing lighting solution through consultations and a thorough analysis of individual project requirements.



### **Professional lighting design**

We plan your lighting solution so that you can take full advantage of its energy efficiency.



### **Fine-tuning**

Your wishes are taken into account once again.



### **Implementation of the project**

We support you in the realization.

#### **Our full project service**

We offer you a comprehensive range of services to ensure that your project is a complete success. Our team will guide you through all phases of the planning process with extensive knowledge and many years of experience. We are at your side from the analysis of room requirements to the selection of suitable lighting technologies and the preparation of detailed lighting plans.

In addition, you will receive access to important resources such as a light calculation software, the ISOLED® product catalog and technical documentation.

#### **Always up to date with the latest lighting technology**

Stay up to date with the latest LED lighting technology with our training courses and workshops. Interactive presentations, practical demonstrations and discussion panels will immerse you in the world of lighting design. Our events not only provide you with practical skills for implementing your projects, but also offer space for exchanging experiences and networking.



# Norms and standards for optimum safety

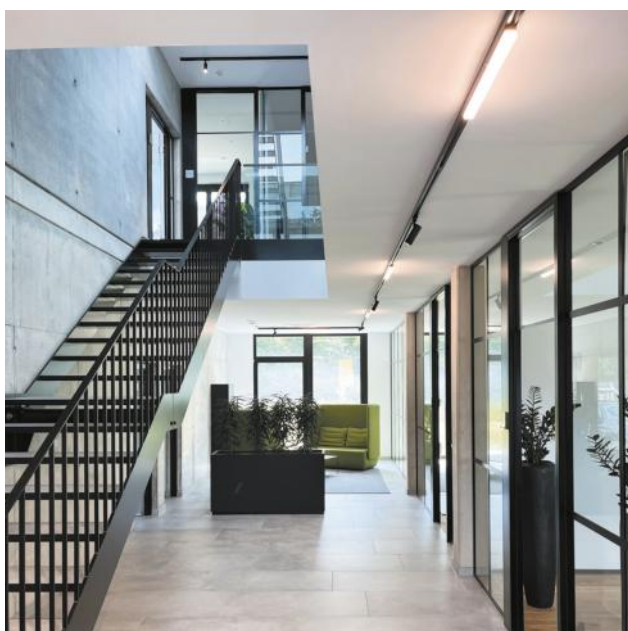
In architecture, lighting plays a central role in the design of rooms. The focus is not only on aesthetic aspects, but safety and functionality also play a decisive role. Standards and guidelines are therefore essential to ensure that lighting systems meet user requirements and offer a high level of safety.

Standards are standardized specifications that ensure that products and systems meet certain quality and safety standards. In lighting technology, they guarantee the effective and safe use of light sources. The most important standards include the European standards (EN) and the international standards of the International Electrotechnical Commission (IEC).

Directives regulate, among other things, lighting design in interiors, safety lighting in emergency situations and the safety standards that luminaires must meet. Well-planned lighting not only fulfills the legal requirements mentioned above, but also makes a significant contribution to safety in buildings. This includes the prevention of accidents through sufficient brightness, protection against glare and the creation of a pleasant visual environment. It also includes emergency lighting, which is automatically activated in an emergency to enable evacuation.

In order to maintain an overview of this multitude of regulations and standards, we support you with our specialist knowledge of the constantly changing legal requirements and industry standards. We help you to comply with current regulations while implementing innovative solutions.

Our goal is to help you minimize risks, optimize costs and maximize the long-term performance of your buildings.



## Lighting conforming to standards

This ensures that lighting installations comply with established standards and guidelines.

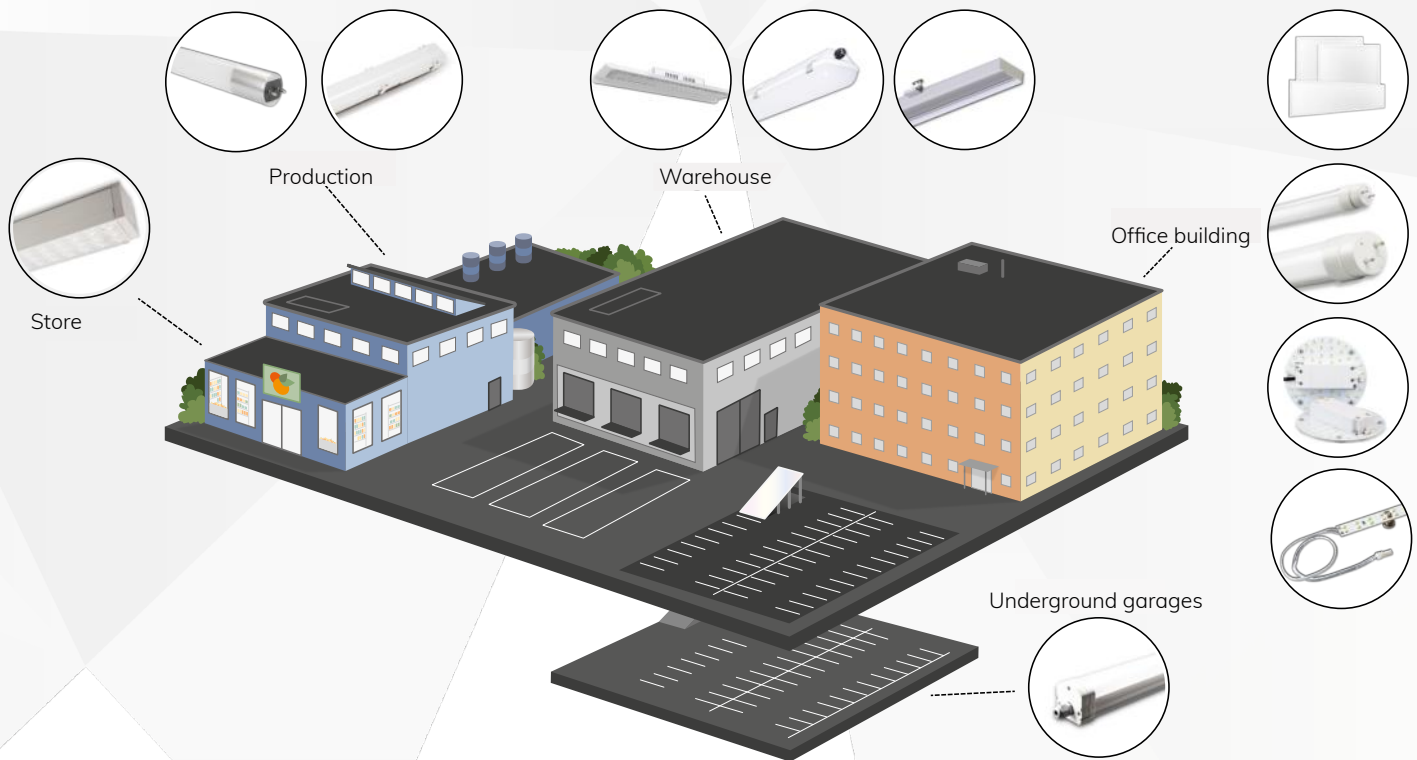


## Efficiently retrofitting existing luminaires

It is often worth retrofitting older lighting systems with LEDs, particularly in old buildings and with expensive lighting fixtures. In terms of sustainability, it is also possible to retain existing luminaire bodies.

## All lighting solutions for operations at a glance

Thanks to our wide range of products, we can offer LED luminaires for all sectors of the building, whether indoors or outdoors. We offer a professional analysis, the development of tailor-made concepts and the realization of the project with the highest quality standards. We provide you with a lighting concept that combines functionality and aesthetics and meets the highest quality and safety standards.



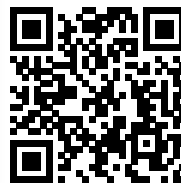
### Extending the service life through maintenance and repair service

Regular maintenance and professional repairs can easily extend the service life of the installed lighting systems. ISOLED® is committed to ensuring that your installed lighting systems continue to function optimally and that long-term performance is guaranteed. We therefore offer comprehensive maintenance and repair services tailored to the individual needs of our customers.



### Tube replacement - replacement of fluorescent tubes with ISOLED® retrofit circuit boards

Old fluorescent tubes can be replaced quickly and easily with our ISOLED® retrofit circuit boards. This gives you an energy-efficient, environmentally friendly and long-lasting lighting solution.



**YouTube**

« Here's the video



©Gloria Layr - eee hotel group

# Hotels and restaurants

In hotels and restaurants, lighting has to meet a wide range of requirements: It should help guests find their way around, withstand the environmental influences in saunas and pools and be easy and practical to control.





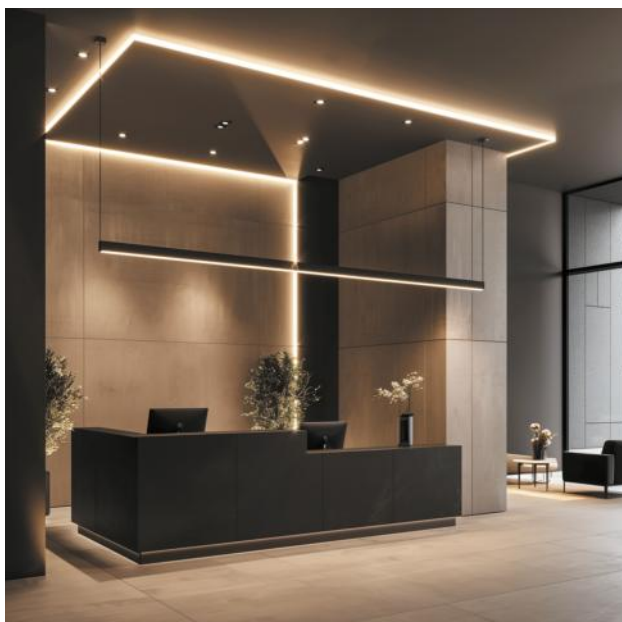
## Vintage is very much in vogue!

Our Infinity series offers you the opportunity to design individual pendant lamps that are perfectly tailored to the requirements of your project. The LED illuminants not only impress with their elegance, but also with their sustainable technology.



## Indirect lighting

Our drywall profiles are suitable for both direct and indirect lighting. Indirect lighting creates a stylish effect and creates an inviting atmosphere. An indirect light source underneath the reception desk is particularly impressive: it emphasizes the contours and creates an optical floating effect.



## Lighting solutions for demanding requirements

Our high-temperature flex stripes are specially designed for challenging areas of application. With a protection class of IP68, they are completely waterproof and extremely heat-resistant. These properties make the flex stripes ideal for use in spa sectors or swimming pools.

Count on reliable and durable lighting solutions that offer the best performance even under extreme conditions.





## Store and retail

In retail spaces, the light has to be right! Colors must be reproduced as faithfully as possible so that the products still meet the customer's expectations after purchase.





### True to nature color reproduction

True-to-life color rendering is essential in sales. Our spotlights with a color rendering index of CRI99 guarantee outstanding lighting quality. This lighting not only improves visual quality, but also creates a lively atmosphere in which customers feel comfortable.

Rely on our high-precision spotlights to present your products in the best possible way and create an inviting environment.



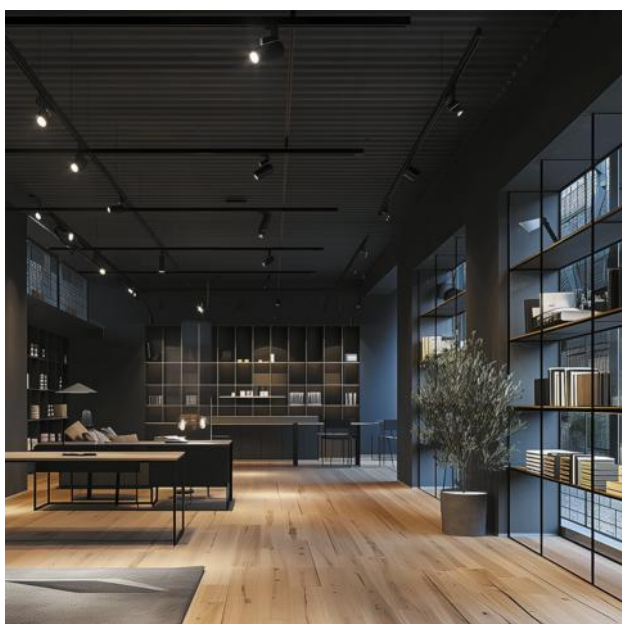
### Foodlight

Freshly baked bread, raw meat and crunchy vegetables - these products deserve the best presentation. Our foodlights and food flex stripes are specially designed for this. The light colors are optimally adapted to the respective food and make it look particularly fresh and appealing. Our luminaires are also FoodSafe certified, which guarantees maximum safety and quality.



### Flexible, precise and creative

The Track48 rail system impresses with its simple design and clear design language, which blends seamlessly into any environment. Its unobtrusive aesthetics allow it to blend harmoniously into the room. The luminaires are individually adaptable to the room conditions and can be repositioned at any time. This flexible track system offers an intelligent and adaptable lighting solution, particularly in retail spaces that are regularly redesigned.







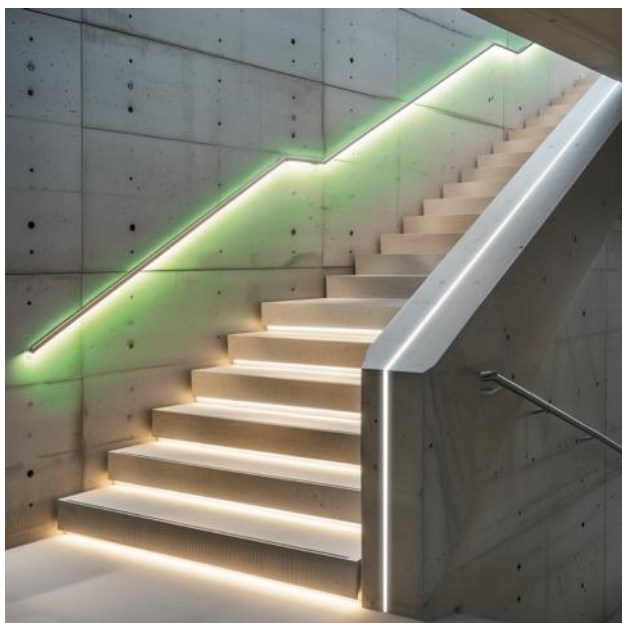
# Private



People should feel comfortable within their own four walls, so harmonious lighting is essential. Rooms with a variety of uses particularly require a well thought-out lighting concept. Luminaires with a dimming function can help to adjust the mood flexibly.

## Stylish staging

Our LED-flex stripes adapt perfectly to the contours of any staircase. They not only provide elegant lighting, but also ensure elevated safety thanks to the uniform illumination of the levels. The LIME flex stripe used activates the green component included in the exposed concrete and integrates seamlessly into the concrete with our special concrete profile.



## Unobtrusive elegance

The more discreet and unobtrusive the lighting, the better. Minimalism is a popular furnishing style that also influences lighting. Our solutions blend seamlessly into the design. With a black cover, the profile becomes one with the kitchen and the restrained lines of light ensure optimum illumination of the work surface. After cooking, this discreet lighting transforms the kitchen into a pleasant, inviting atmosphere.



## Lines of light across the room

From A to B without a profile - our SkyFlex flex stripes make this possible. These can be easily mounted on the wall and stretched across the room as required. This flexible lighting solution not only offers exciting installations, but is also easy to install.

SkyFlex flex stripes are ideal for rooms with vaulted ceilings or for implementing creative lighting installations.

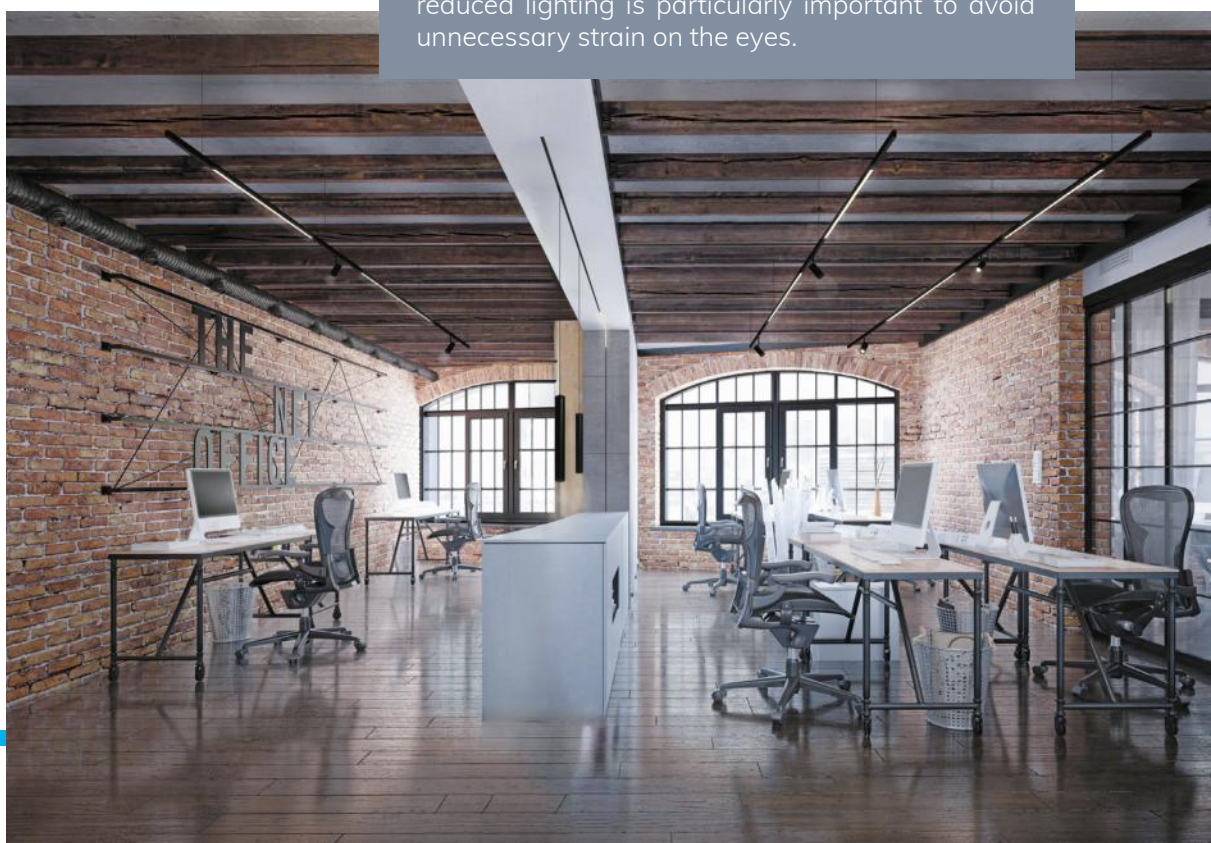






# Office

Long working days and demanding tasks for the eyes and brain are part of everyday life for many people. This is why the right lighting at office workstations is of crucial importance. Glare-reduced lighting is particularly important to avoid unnecessary strain on the eyes.





### **Skyblue - lighting that gives you energy!**

With our Skyblue flex stripe, we have made great progress in the sector of Human Centric Lighting. The special light color has an activating effect and increases productivity. The cold light, which is shone indirectly onto the ceiling, imitates the blue sky and stimulates cortisol production in the brain. This lighting not only wakes you up, but also boosts productivity.



### **The perfect fusion of light and sound**

In larger offices, it can quickly become uncomfortably loud, particularly when several employees are on the phone at the same time. Our innovative lighting solution with integrated acoustic elements offers the ideal solution. It not only ensures optimum illumination of the workplace, but also improves the room acoustics, reduces noise and promotes concentration. Create an inspiring and pleasant working environment that is both visually and acoustically impressive.



### **Modern and timeless**

Working with exposed concrete, especially in the up-and-coming brutalist style, is one of the most significant developments in architecture in recent years. To breathe life into these bare concrete walls, architects often rely on flex stripes. Our concrete profile allows flex stripe and profile to be integrated without any problems. It is cast in during the formwork and creates a perfect groove for the profile afterwards.





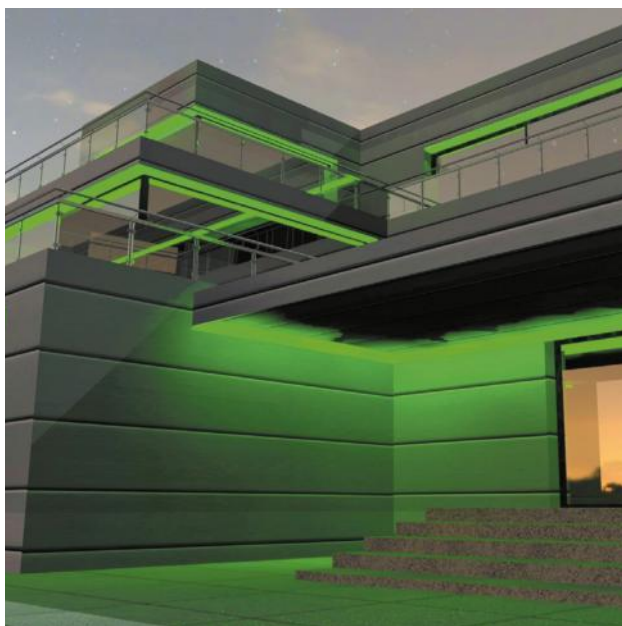
## Industry and commerce

Every lighting concept must comply with certain standards and regulations in order to enable employees to work safely. Particularly in the industrial sector, there are various guidelines for optimal workplace lighting.



## Optimum outdoor lighting with Neon Pro

Our Neon Professional flex stripes are perfect for outdoor use. With a protection class of IP67 and a 360° silicone coating, they can withstand rainy weather and condensation without any problems. These flex stripes also impress with their high luminosity and effectively illuminate any façade.



## Switch to LED now and save money!

With our retrofit circuit boards, you can keep your existing luminaires and easily convert them to LED. Switching to LED lighting is particularly recommended due to the ban on fluorescent tubes. In addition to saving energy, LED lamps also offer significant cost savings.



## TÜV certification

Our Aqua flex stripes offer the ideal solution for perfect outdoor lighting with TÜV-certified IP67 assembly. This ensures maximum safety and reliability for projects that require lighting solutions with an elevated protection class. The strict TÜV test criteria confirm that the flex stripes are fully protected against dust and temporary immersion in water. High-quality materials and robust workmanship guarantee a durable and reliable end product that delivers what it promises, even under adverse conditions.

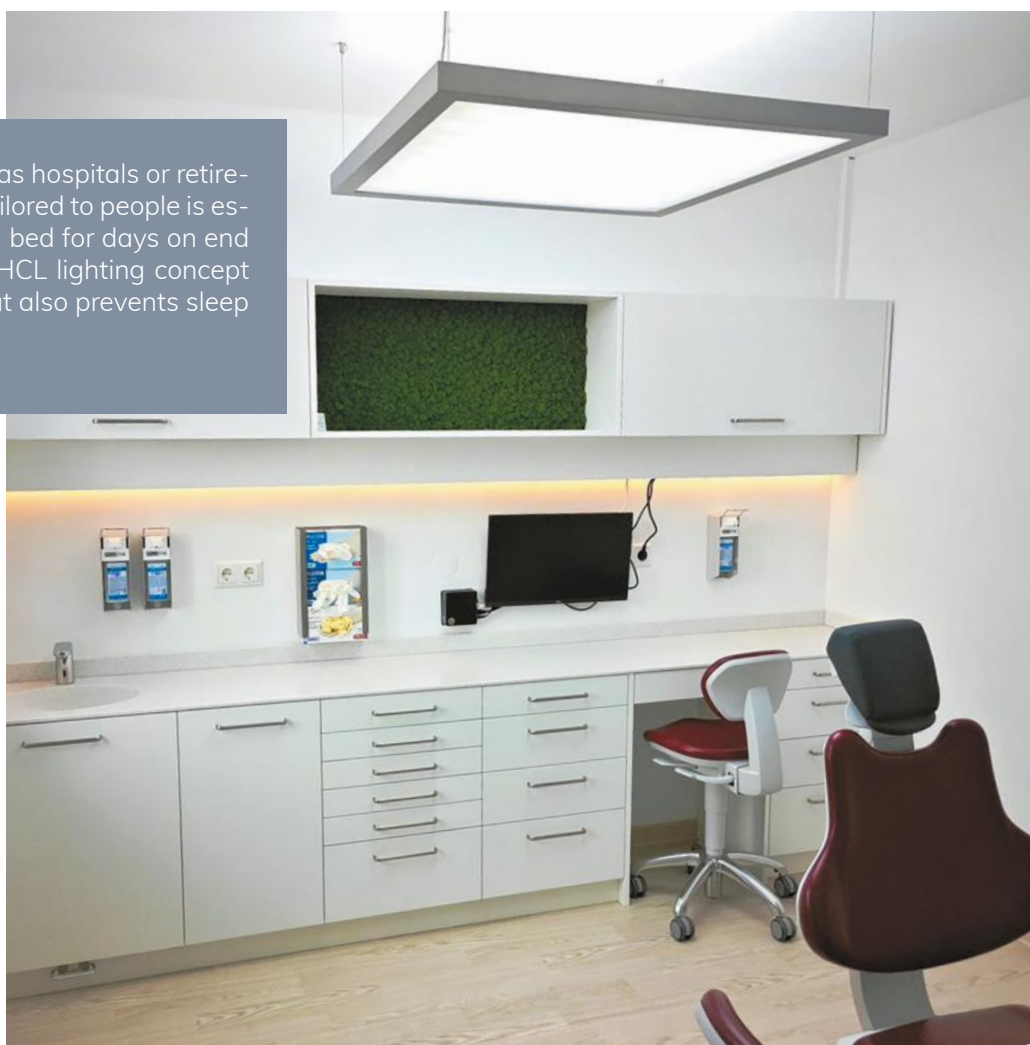






# Healthcare sector

In the healthcare sector, such as hospitals or retirement homes, lighting that is tailored to people is essential. As patients often lie in bed for days on end and do not get outdoors, an HCL lighting concept not only supports recovery, but also prevents sleep problems and depression.



### Nature meets state-of-the-art LED technology

The use of natural materials such as wood or moss is not only sustainable, but also has a significant impact on the atmosphere of a room. LED lighting enhances the effect and further emphasizes the natural feel. Particularly in retirement homes, where many residents no longer have the opportunity to enjoy the outdoors, the use of natural materials can have a positive influence on the psyche.



### A lighting solution perfectly tailored to people

The focus is on people - that is the motto of Human Centric Lighting. This lighting solution adapts to the natural day-night rhythm. Depending on the light color, the brain emits different messenger substances that influence the energy level. Warm light promotes melatonin production and supports relaxation, while cold light has an activating effect and elevates cortisol levels.

In hospitals in particular, a lighting solution that is tailored to people can have a positive influence on patients' recovery and mental health.



### A multifunctional track system

Our Track48 rail system with integrated acoustic element turns any recreational room into a true all-rounder. This solution is not only visually appealing, but also significantly improves the room atmosphere. The track system provides pleasant illumination of the room, while the acoustic element effectively dampens the noise level.



# Tailor-made lighting solutions for every requirement





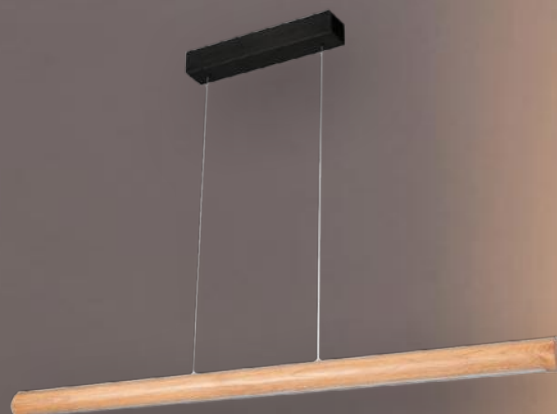
# RUNDLING



PENDANT  
LIGHT



FLOOR  
LAMP



## LED PENDANT LAMP

35 watts / 45 watts | 3,000K |  
2.720 lm / 3,670 lm | dimmable  
Oiled oak | European real wood

### ● Canopy black

1.2 m [116838](#)  
1.6 m [116840](#)

### ● Canopy nickel

1.2 m [116837](#)  
1.6 m [116839](#)



## LED FLOOR LAMP

32 watts | 3,000K | 2,600 lm |  
Touch-dimmable | Oiled oak |  
European real wood

### ● Black base

1,4 m [116841](#)

### ● Nickel base

1,4 m [116842](#)



# PFETTE



PENDANT  
LIGHT



FLOOR  
LAMP



## LED PENDANT LAMP

35 watts / 58 watts | 3,000K |  
4,380 lm / 4,850 lm | dimmable | Up&Down  
Oiled oak | European real wood

### ● Canopy Black

1,2 m [116848](#)  
1,6 m [116850](#)

### ● Canopy Nickel

1,2 m [116847](#)  
1,6 m [116849](#)



## LED FLOOR LAMP

32 watts | 3,000K | 2,600 lm |  
Touch-dimmable  
Oiled oak | European real wood

### ● Black base

1,4 m [116851](#)

### ● Nickel base

1,4 m [116852](#)





# RIFFL



PENDANT  
LIGHT



WALL  
LUMINAIRE



## LED PENDANT LAMP

3.000K | 2,940 lm / 3,550 lm |  
dimmable | Up&Down  
Oiled oak | European real wood



**Canopy black**

1.2 m | 28 W **116853**  
1.2 m | 47 W **116855**



**Canopy nickel**

1.2 m | 28 W **116854**  
1.2 m | 47 W **116856**



## LED WALL LIGHT

3.000K | 1,050 lm  
Touch-dimmable | Up&Down  
Oiled oak | European real wood



**Black**

38 cm **116858**



**Nickel**

38 cm **116857**



# FÖHNIG



PENDANT  
LIGHT



FLOOR  
LAMP



## LED PENDANT LAMP

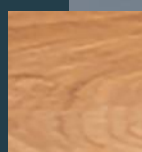
14 watts | 3000K | 840 lm |  
Oiled oak | dimmable



Canopy black  
1.17 m [116844](#)



Canopy nickel  
1.17 m [116843](#)



## LED FLOOR LAMP

18.5 Watt | 3000K | 1180 lm |  
Oiled oak | Touch-dimmable



Black base  
1,58m [116846](#)



Nickel base  
1,58m [116845](#)





# HOLZ DRIFT



PENDANT  
LIGHT



FLOOR  
LAMP



TABLE  
LUMINAIRE



## LED PENDANT LAMP

22 watts / 28.5 watts | 3000K |  
Oiled oak | dimmable | Up& Down

### Wooden canopy

1.2m **116859**  
1.5m **116860**



# SONNECK

## TABLE LAMP

10 watts | 3000K | 980 lm  
Oiled oak | wooden base | 45 cm



## LED FLOOR LAMP 2-FOLD

37.5 watts | 3000K | 3370 lm |  
Oiled oak | Touch-dimmable

Wooden base  
1,56m **116861**

## LED FLOOR LAMP 3-FOLD

60 watt | 3000K | 6030 lm |  
Oiled oak | Touch-dimmable

Wooden base  
1.56m **116862**







# Hoiz

ISOLED

RECLAIMED  
wood luminaires

## Rooted in the past

A unique piece with up to 300 years of history! With our Hoiz luminaires, you not only get a unique lighting solution, but also a piece of Tyrolean history. The reclaimed wood used for this particularly light series was originally used in farmhouses and mountain huts in Tyrol.

Combined with modern LED technology, we have breathed new life into the wooden beams and floorboards and given them a new meaning.







## Nature meets technology

Whether in a rustic inn or a modern hotel, with our Hoiz luminaires you get a lighting solution that impresses on more than just a visual level.

The reclaimed wood brings nature and history into every room, while the innovative LED lighting provides the necessary illumination.

Our Hoiz luminaires are available as floor lamps and also as pendant lights in various series with five pieces each. Each luminaire is unique and tells its own story.

Give your creativity free reins and develop a lighting concept that stands out!



## The perfect lighting for every Wood

Do you already have a piece of wood that you would like to configure as a luminaire? That's no problem! On request, we can also install high-quality LED technology in your own piece of wood. This not only gives you a unique luminaire, but also a piece of your own history. Let yourself be inspired and transform your wood into an incomparably unique piece.



Bring a piece of history  
into your home



 YouTube

« Here's the video



The year is 1820. The Tyrolean fight for freedom and the Battle of Bergisel took place eleven years ago. It was precisely in this year that one of many mountain huts was built in the Zillertal, Tyrol's largest side valley. The mountain huts have a long tradition today, but back then they were only just beginning.

Even though this refuge no longer receives hikers on the mountain, it lives on in your unique Zillachtol luminaire.

The wood in which the advanced LED technology was installed was a load-bearing part of this refuge for a long time. Many exhausted mountaineer's feet walked over this plank and contributed to its unique look before it found its way to you. It has witnessed the traditions and historical developments of the Zillertal.

# Zillachtol

ISOLED

RECLAIMED  
wood luminaires

The refuge was built shortly after the unification with Austria and stood on the mountain for over 200 years, defying the adversities of wind and weather.

It was built to offer mountaineers a place to sleep. However, building a hut on the mountain was not an easy undertaking, as transporting the raw materials was a major challenge. The wood in particular had to travel a rocky road before it could be installed in the hut.

As mountain tourism increased, more and more hikers visited the huts. Many heavy hiking boots left their mark on the floorboards of the refuge, giving the wooden board its unique appearance.

While the locals lived out their traditions in the valley, mountaineering traditions were cultivated on the mountain near the refuge. Whether it was a summit cross, a snack and schnapps after conquering the mountain or an entry in the summit book, there are many long-standing rituals that make up this community.



## LED reclaimed wood pendant lamp

180cm | 85 watt dynamic white | CRI92  
**116866**







# Wüdschnau

ISOLED

RECLAIMED  
wood luminaires

The construction of the farmhouse at the top of the hill not only created a new home but also a small farm. The farm was, as was typical in the Tyrolean lowlands, a single farmhouse that combined living and working quarters under one roof.

The inhabitants worked hard and were mostly self-sufficient. Looking after the livestock and maintaining the fields were the main tasks of the mountain farmers. Processing the produce was also often a good source of extra income. The so-called "Stube" was usually used as a room for this work. This is comparable to a living room today.

Various traditions were also practiced on the farm, including schnapps distilling, which is very important in the Wildschönau. The Wildschönauer Krautinger is a beet schnapps that is also well known outside the valley.

The farmhouse has survived two world wars and several generations of residents in the 100 years it has served as a home.

## LED reclaimed wood floor lamp

140cm | 30 Watt dynamic white | CRI92  
**116865**

## LED reclaimed wood floor lamp

200cm | 42 watt dynamic white | CRI92  
**116864**





# LED LIGHT LINES MODULAR

The modular LED light lines from ISOLED® can be individually configured and perfectly integrated into your architectural concept. You can choose from different mounting types, light and profile colors as well as covers, giving you absolute design freedom for the lighting in your rooms. Perfect for offices and workstations, conference rooms, corridors and many additional areas!

We will work with you to find  
the right LED lighting solution  
for your project!



Find out more!

EN

[www.isoled.info/en/modulares-lichtbandsystem](http://www.isoled.info/en/modulares-lichtbandsystem)

**With the LED modular light luminaires you benefit from:**



**Flexible lighting design and customer-specific modifications**



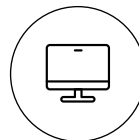
**Individual mounting options**



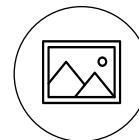
**A wide selection of dimming variants, light and profile colors, and covers**



**Eligible**  
up to 140 lm/W



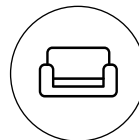
OFFICE



MUSEUMS



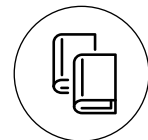
SEMINAR AND EVENT ROOMS



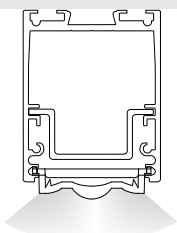
LIVING AREAS



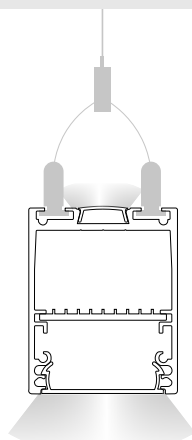
HOTEL INDUSTRY



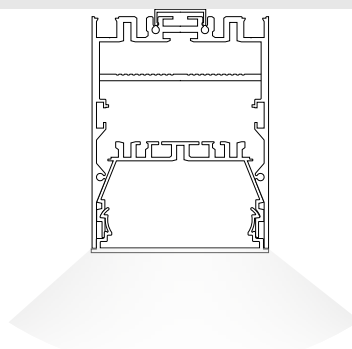
SCHOOLS AND UNIVERSITIES



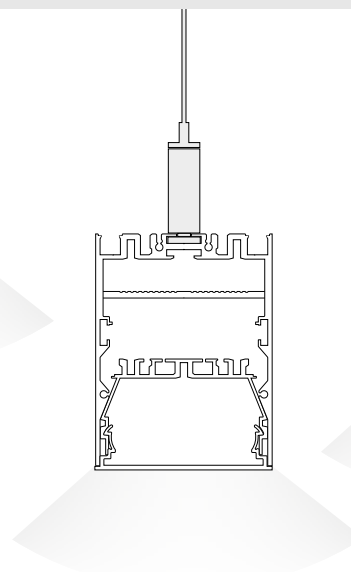
**PROLAMP30 V2**  
Surface-mounted light  
Direct | lens cover



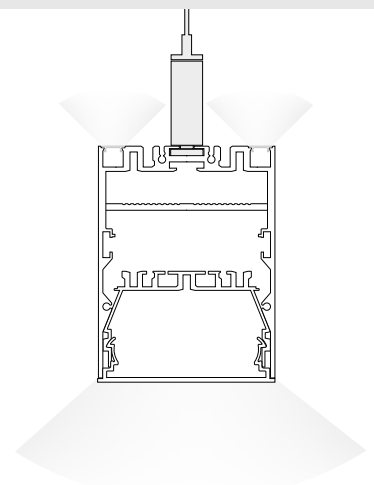
**PROLAMP30 V2**  
Pendant light  
Direct + Indirect



**PROLAMP40**  
Surface-mounted light  
Direct



**PROLAMP40**  
Pendant light  
Direct



**PROLAMP40**  
Pendant light  
Direct + Indirect



**Modular continuous-row lighting system**

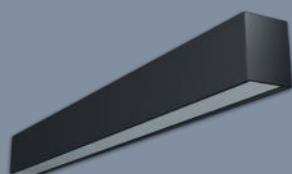




# PROLAMP MODULAR SYSTEM

## FOR INDIVIDUAL CONFIGURATION

### Mounting type



Surface-mounted light



Pendant lamp

### Cable connection

- » rear - central
- » rear - on the side
- » front

### Housing colors

**Black**  
RAL 9005  
Powder coated

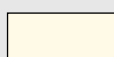
**White**  
RAL 9016  
Powder coated

**Silver**  
Powder coated

### Dimming



2.700 K



3.000 K



4.000 K



SKYBLUE



CCT



RGB



RGB+WW

	2.700 K	3.000 K	4.000 K	SKYBLUE	CCT	RGB	RGB+WW
Switchable	✓	✓	✓	✓	✗	✗	✗
Triac	✓	✓	✓	✓	✗	✗	✗
DALI Push	✓	✓	✓	✓	✓	✗	✗
ZigBee	✓	✓	✓	✓	✓	✓	✓
Radio	✓	✓	✓	✓	✓	✓	✓

# #1



2.700 K



3.000 K

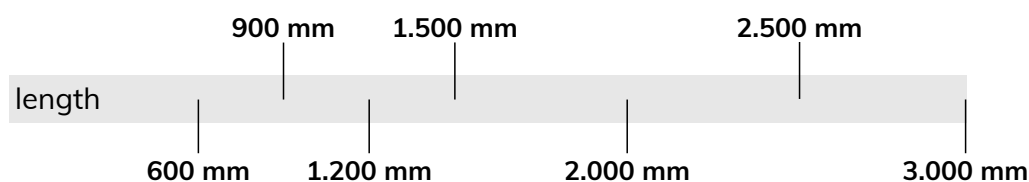
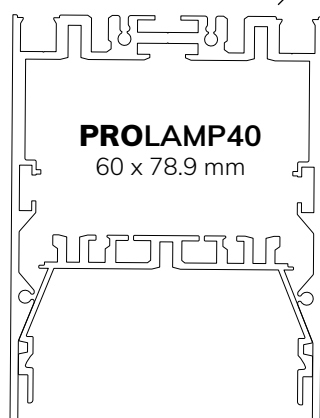


4.000 K



SKYBLUE

Indirect lighting - light color  
ONLY POSSIBLE WITH THE PENDANT LAMP



Individual lengths can also be realized on request.

Direct lighting - light color



2.700 K



3.000 K



4.000 K



CCT

Cover variants Flat



**Opal**  
65% light  
transmission

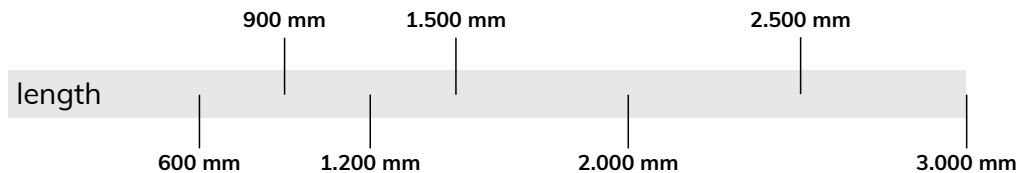
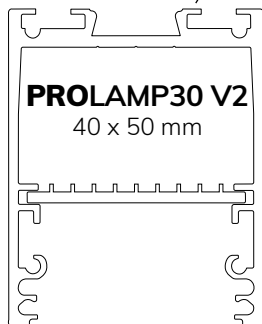


**OpalPlus**  
80% light  
transmission

# #2

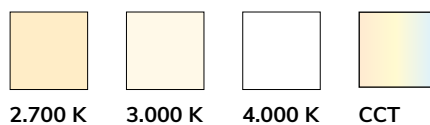


Indirect lighting - light color  
ONLY POSSIBLE WITH THE PENDANT LAMP



Individual lengths can also be realized on request.

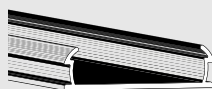
Direct lighting - light color



## COVERS VARIANT 1

with flush flat cover

Cover variants Flat



**Opal**  
65% light transmission



**OpalPlus**  
80% light transmission

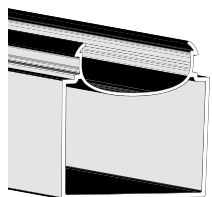


**Prismatic**  
75% light transmission

## COVERS VARIANT 2

with U-Cover

U-Cover



**U-Cover | OpalPlus**  
65% light transmission

## COVERS VARIANT 3

with flush flat lens cover

Lens cover



**60° lens**  
80% light transmission

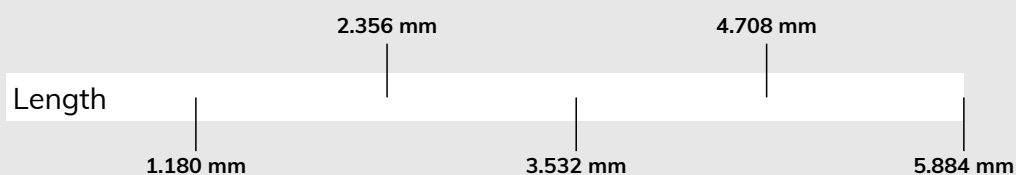


**Asymmetrical**  
80% light transmission



**Double asymmetrical**  
80% light transmission

The lens insert covers cannot be shortened.



# HIGHLIGHTS FROM OUR RANGE

Our sample configurations give you an overview of the most important features and areas of application of our modular continuous-row lighting system. Discover the versatility and adaptability of this lighting concept and be inspired for your own projects.

We will be happy to provide you with a no-obligation initial consultation!



## Dynamic white DALI-dimmable (HCL) ceiling light for the office

### 200104

LED surface-mounted light PROLAMP30H  
41W | silver | 1500mm | opal+ Push/DALI-dimmable | CCT

#### Special features

- » Human Centric Lighting
- » Dynamic white lighting

## Glare reduced pendant lamp for the office with indirect SkyBlue lighting

### 200103

LED surface-mounted light PROLAMP30LID  
35W | white | 1200mm | prismatic 4,000 K | SkyBlue

#### Special features

- » Prismatic cover
- » Indirect lighting with SkyBlue







### TRIAC dimmable ceiling mounted light in kindergarten (>150lm/W)

#### 200110

LED surface-mounted light PROLAMP40D  
49W | white | 3000mm | opal+ TRIAC dimmable | 3,000K

#### Special features

- » TRIAC dimmable
- » Can be connected horizontally with corner connectors

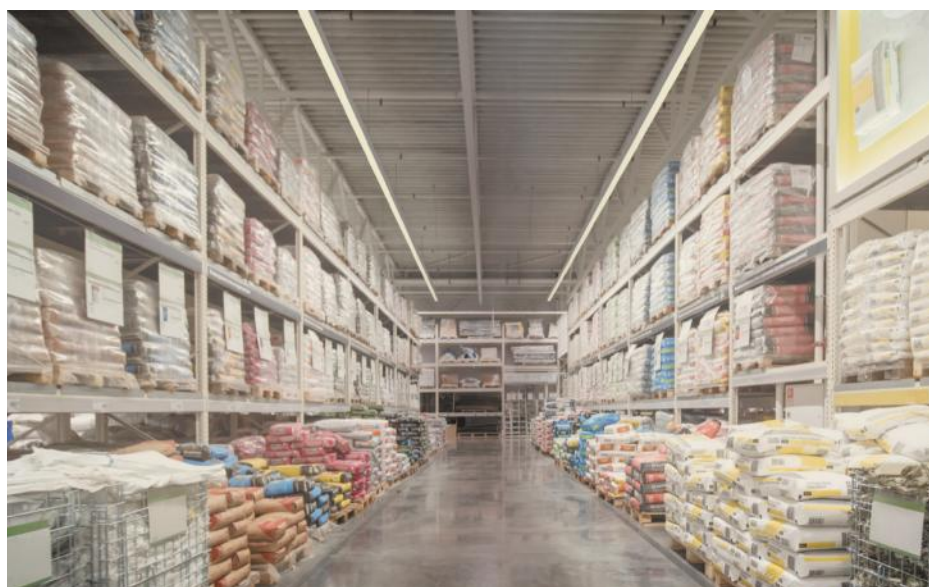
### Double asymmetrical strip light in the hardware store (>120lm/W)

#### 200109

LED PROLAMP30FID  
172W | silver | 5884 mm | double asymmetrical 25°  
Push/DALI-dimmable | 4,000K | 4,000K | 2-piece

#### Special features

- » Special lens cover
- » Indirect lighting



### Smart controllable, dynamic white dining table pendant luminaire

#### 200111

LED pendant light PROLAMP40ID  
68W | white | 1500mm | opal+ Zigbee + Sys-Pro  
dimmable | CCT | 2,700K

#### Special features

- » Smart home-capable lighting solution
- » Dynamic white lighting



**Pendant luminaire above workstations in the library with indirect RGB+WW lighting**

**200112**

LED pendant luminaire PROLAMP30FID 35W  
| white | 1180 mm | lens 60° Sys-Pro radio  
dimmable | CCT | RGB+WW

**Special features**

- » Dynamic white lighting
- » Indirect RGB+WW lighting

**Dynamic white pendant lamp  
Up&Down at a hotel reception desk**

**200107**

LED pendant luminaire PROLAMP30HID  
61W | black | 1500 mm | U-Cover Push/DALI  
dimmable | CCT | CCT

**Special features**

- » Dynamic white lighting
- » U-Cover



**Mirror luminaire in the bathroom of a hotel (<130lm/w)**

**200106**

LED pendant light PROLAMP30H  
10W | white | 600mm | U-Cover | 3,000K

**Special features**

- » U-Cover





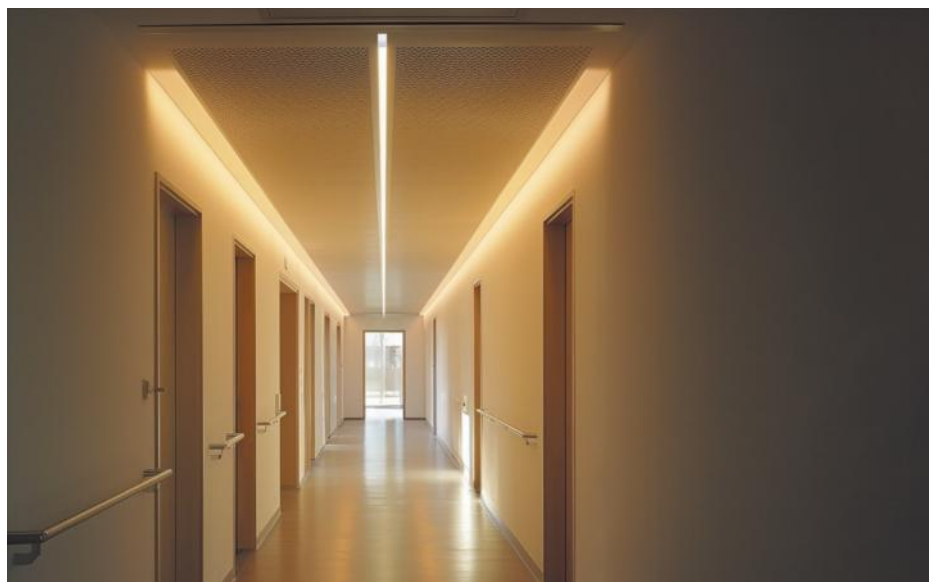
### Ceiling mounted light in hallway retirement home (>150 lm/W)

**200105**

LED surface-mounted light PROLAMP30H  
49W | white | 3000 mm | opal+ | 3,000K

#### Special features

- » Wide-area illumination



### Asymmetrical linear luminaire in the supermarket (120 lm/W)

**200108**

LED pendant luminaire PROLAMP30F  
34W | white | 2356 mm | asymmetrical 25° |  
4,000K

#### Special features

- » Special lens cover



## Discover our online luminaire configurator!

Create a luminaire that meets all your project requirements in just a few clicks. Various options are available to you, both visually and technically.

Are you still unsure about what your luminaire should be able to do or do you still have questions? Simply send us your inquiry. We will be happy to offer you a non-binding initial consultation and a free product proposal.

**We are happy to advise you!**

# NEW LED ACOUSTIC LUMINAIRES

Adaptable, multifunctional and flexible - these are the acoustic luminaires from ISOLED®. They offer an intelligent lighting solution and effective noise reduction. The combination of acoustic and lighting elements makes optimum use of the available space.

An outstanding feature of our light and noise solution is its incredible adaptability. Both the Track48 light frames and the H50 acoustic baffles can be individually configured according to the customer's wishes. This allows maximum flexibility and easily meets specific lighting requirements and design preferences.



Find out more!

EN

[www.isoled.info/en/akustikleuchten](http://www.isoled.info/en/akustikleuchten)







**Efficient sound absorption and optimum lighting solution**



**Space-saving placement of lighting and acoustic absorbers**



**Configurable luminaire inserts according to customer requirements**



**Modern design that blends in perfectly with the surroundings**

## Acoustic material

ISOLED's acoustic inlays consist of advanced, noise-absorbing material made from 100% recycled polyester fibers. Depending on the installation, the acoustic panels achieve a very high sound absorption value.

The H25 acoustic absorbers have been specially developed for our Track48 luminaire frames, while the H50 acoustic baffles are equipped with ready-made LED profile inserts.

The surface of the acoustic elements has a smooth, fabric-like structure on both sides, while the front side has a felt-like feel. The acoustic elements can be easily cleaned with a slightly damp cloth.

Durable and resistant, the acoustic elements are ideal for use in a wide variety of configurations.



**Flame retardant**



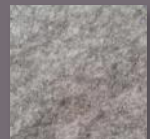
**Resistant to fungal and bacterial growth**



**High flexural strength and compressive strength**

## Colors Acoustic inlays

Grey



Anthracite



Black



# QUIET CAN ALSO BE LOUD

**A customized luminaire according to your wishes - our configurator makes it possible!**

There is strength in tranquillity - as well as concentration and productivity. Particularly in the workplace, a lighting solution with an integrated acoustic element creates a pleasant atmosphere and improves well-being.

This is achieved effortlessly with our LED acoustic luminaires. The luminaires are individually configurable and can be perfectly adapted to the conditions of the room. The acoustic baffles can be equipped with both direct and indirect lighting.

**Discover the highlights from our acoustic range!**

## Luminaire configuration made easy

You can select the following components.

1. Model series
2. Mounting type
3. Cable connection
4. Color of luminaire profile
5. Acoustic baffle dimensions
6. Color acoustic baffle
7. Cover or lens
8. Dimming
9. Color temperature direct
10. Color temperature indirect

## Acoustic baffle H50

product	item no.
<b>Acoustic pendant BAFFEL TRACK48ID</b> (unequipped) Black   1250mm   indirect: 20 Watt, SkyBlue	<a href="#">200118</a>
<b>Acoustic surface-mounted BAFFEL TRACK48</b> (unequipped) Anthracite   1250mm	<a href="#">200119</a>
<b>Acoustic pendant BAFFEL TRACK48ID</b> (unequipped) Black   1500mm   DALI-dimmable   indirect: 15 watts, 3000K	<a href="#">200120</a>
<b>Acoustic pendant BAFFEL TRACK48ID</b> (unequipped) Gray   1500mm   DALI-dimmable   indirect: 15 watts, 4000K	<a href="#">200121</a>



## Acoustic baffle H50

product	item no.
<b>Acoustic pendant BAFFEL LAMP30LID</b> 32W   black   1250mm   prismatic   Sys-Pro radio dimmable CCT+CCT	<a href="#">200113</a>
<b>Acoustic pendant BAFFEL LAMP30HID</b> 53W   black   1250mm   opal+   Zigbee + Sys-Pro dimmable CCT+RGB	<a href="#">200114</a>
<b>Acoustic surface-mounted BAFFEL LAMP30H</b> 33W   anthracite   1500mm   lens 60°   TRIAC dimmable   4000K	<a href="#">200115</a>
<b>Acoustic pendant BAFFEL LAMP30HID</b> 54W   black   1500mm   prismatic   Sys-Pro dimmable 4000K+SkyBlue	<a href="#">200116</a>
<b>Acoustic Surface-mounted BAFFEL LAMP30H</b> 34W   gray   1500mm   opal+   Push/DALI-dimmable   3000K	<a href="#">200117</a>



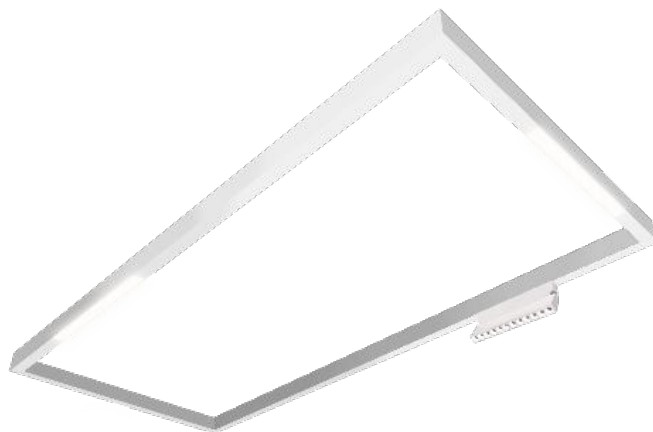
# TRACK48 LIGHT FRAME

## Stylish multifunctional frames

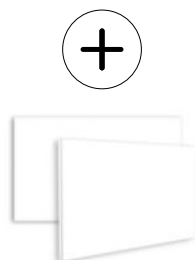
The illuminated frames consist of the components from our Track48 surface-mounted track range. Accordingly, all Track48 luminaires can be used. An acoustic inlay or IR panel from our range can also be fitted as an option.

Dimensions	Black	White
320x1500 mm	<b>116878</b>	<b>116871</b>
592x1500 mm	<b>116883</b>	<b>116876</b>
500x1192 mm	<b>116880</b>	<b>116873</b>

Indirect lighting is optionally possible with a 48V flex stripe and one of two matching covers (COVER7 or COVER13).



**Can be combined with:**



Infrared panels



Acoustic absorber H25





## APPLICATION AREAS

### What effects does noise have on people

Noise has health, psychological and social effects on people. To counteract the consequences of noise pollution, a well thought-out acoustic concept is an optimal solution.



**Stress**



**Susceptibility to errors**



**Lack of energy**



**Hearing difficulties**

### Why is noise-absorbing lighting important

#### Office

Good mutual understanding is crucial both in meetings and in everyday working life. Room acoustics in offices are therefore extremely important to ensure smooth communication. A low noise level is not only important for the speaker, but also makes it easier for the listeners to understand what is being said. Noise-reducing lighting promotes both concentration and productivity.

#### Foyers & stairwells

Modern, minimalist architecture with materials such as glass and concrete is increasingly being used in stairwells and foyers. Although visually appealing, this design contributes significantly to sound propagation. Short conversations in the hallway and entrance area often generate a high noise level that not only echoes in the hallway, but can also be heard in adjacent rooms. Pleasant acoustics create an inviting atmosphere, particularly in the reception area.

#### Schools & universities

To achieve the best possible learning success, it is essential to keep the noise level as low as possible. This improves speech intelligibility and makes it easier to listen attentively. The teacher's voice should be heard clearly and distinctly throughout the room. Good room acoustics allow the lecturer to speak more quietly, which is easier on the voice and nerves during longer lectures. The right acoustics increase attention and the learning effect in the classroom.

#### Living area

In the home, acoustics are crucial for well-being. The furnishings often contribute significantly to noise development. However, the use of lighting solutions with acoustic elements can also be of great benefit here. They not only reduce noise within the room, but also traffic noise from outside. A quiet living environment promotes relaxation.

**We can offer you the suitable overall acoustic concept for your project!**

We can create an overall concept for you for acoustic absorbers with integrated lighting to achieve a sound-optimized room. It is also possible to purchase pure absorbers and the necessary installation work.

# ISOLED® EUROPEAN BRAND SINCE 2008

Our company consists of professional visionaries and motivated doers, who continuously drive forward the technical developments in LED technology and set new accents and trends with their innovative ideas and solutions.

Since 2008, we have been offering our customers and partners a standardized LED product range with well over 3,050 items, intelligent LED project lighting solutions and customized production of sustainable LED lighting solutions according to individual specifications.

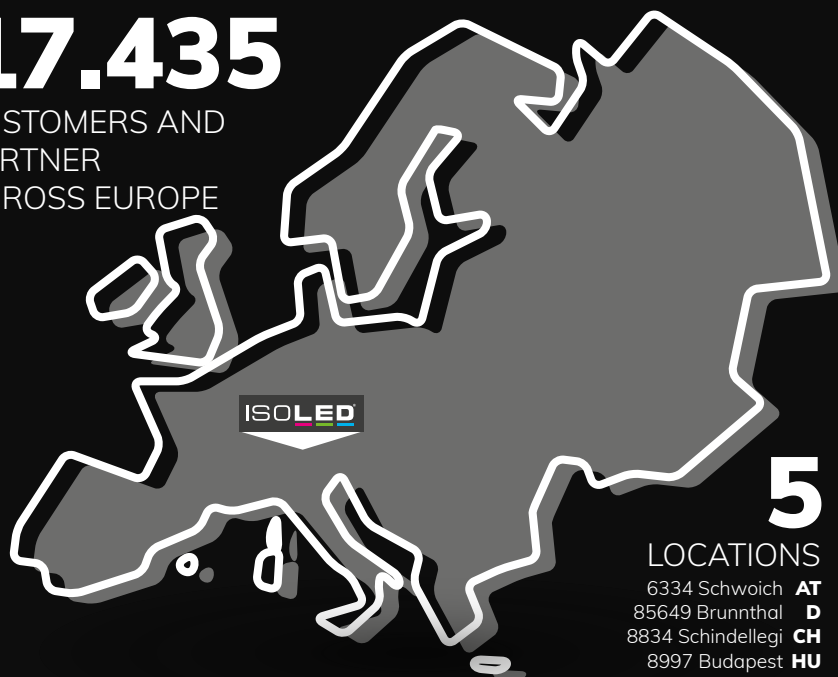
When creating our wide range of products and services, we base our actions both on

- » Requirements of our customers as well as on the
- » technical progress within LED technology.

Excellent quality, highly competent advice from our staff, as well as sustainable growth of our company make sure our partners can reliably cover their needs with the latest LED lighting components and systems.

## 17.435

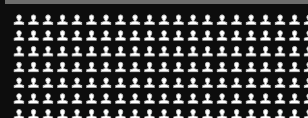
CUSTOMERS AND  
PARTNER  
ACROSS EUROPE



**Specialist and wholesale trade**  
**Trade and commerce**

**Comercial wholesale customer**  
**Architects and planners**

**Industrial customers**  
**Local authorities**



## 180

EMPLOYEES

## 20

NATIONS

## 4.394.214

WEBSITE CALL/YEAR

**+ 96.000** @

SUBSCRIBE TO NEWSLETTER



## 1280

PAGES



## 35.000

PIECE/EDITION

## 5

LANGUAGES

**DE** **EN** **FR** **IT** **HU**

# YOUR PARTNER

## ISOLED®

SINCE 2008



**ISOLED® AUSTRIA**  
ISOLED® FIAI Handels GmbH  
Egerbach 48  
A-6334 SCHWOICH  
AUSTRIA

Tel: +43 5372 219 999

E-Mail: [office@isoled.at](mailto:office@isoled.at)  
[www.isoled.at](http://www.isoled.at)



**ISOLED® GERMANY**  
FIAI Trading GmbH  
Hollerweg 3  
D-85649 BRUNNTHAL  
GERMANY

Tel: +49 810 48 999 200

E-Mail: [office@isoled.de](mailto:office@isoled.de)  
[www.isoled.de](http://www.isoled.de)



**ISOLED® SWITZERLAND**  
Allegra Swiss GmbH  
Einsiedlerstraße 15a  
CH-8834 SCHINDELLEGI  
SWITZERLAND

Tel: +41 44 787 04 75

E-Mail: [info@isoled.ch](mailto:info@isoled.ch)  
[www.isoled.ch](http://www.isoled.ch)

# 99,3 %

**of our customers and partners  
recommend ISOLED® !**

**YOUR DEMAND IS OUR MOTIVATION!**